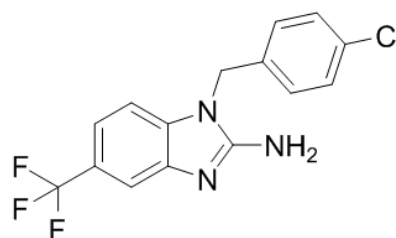


Product Name : NS-638
Cat. No. : PC-42385
CAS No. : 150493-34-8
Molecular Formula : C₁₅H₁₁ClF₃N₃
Molecular Weight : 325.7161496
Target : Calcium Channel
Solubility : DMSO: ≥ 34 mg/mL



Biological Activity

NS-638 is a nonpeptide calcium channel blocker that dose dependently inhibits AMPA-stimulated [3H]GABA-release from cultured cortical neurons with IC₅₀ of 4.3 μM.

NS-638 blocks K(+)-stimulated intracellular Ca(2+)-elevation in cultured cerebellar granule cells with IC₅₀ of 3.4 μM.

NS-638 reversibly blocks N- and L-type Ca(2+)-channels in cultured chick dorsal root ganglion cells (1-30 μM).

NS-638 exhibits anti-ischemic properties in vivo.

References

Møller A, et al. Neurol Res. 1995 Oct;17(5):353-60.

Olesen SP, et al. Acta Neurol Scand. 1997 Apr;95(4):219-24.

Caution: Product has not been fully validated for medical applications. Lab Use Only!

E-mail: tech@probechem.com